



**Another classic line from Stewart Warner—original Heavy Duty™ gauges.**

An authentic look for yesterday's or today's cars or trucks, these gauges feature our patented light ring for superior night-time lighting plus a unique black bezel with a brushed bright ring. They're original...and HEAVY DUTY™!

**Features include:**

- Bold white-on-black graphics
- Black raised bezel with distinctive brushed bright rim
- Classic white pointer with black hub
- Rugged gauge movements-ideal for trucks too
- Matching 5" tach or speedo available

**GOOD-LOOKING YET RUGGED,  
IDEAL FOR TRUCKS TOO**





82642



82164B



550HF-D



550HH-D



284D



284J



284M



284L



284H



284B

## Heavy Duty™ : Gauges



Type	Range	2-1/16"		Note:	Additional Kit Needed:
		Mech	Elec		
Air Pressure	5-100 psi	284N	-		114840 (6 ft. tube) or 114841 (16 ft. tube)
	0-150 psi	-	284T		279C
Ammeter	60-0-60	-	284A	Internal Shunt	
	100-0-100	-	284AA	Reqs. Shunt	407616
	150-0-150	-	284AD	Reqs. Shunt	407616
Boost	0-30/0-15	284BF	-	Red Pointer	
Exhaust Temp	300-1500°F	-	82334		82505
Fuel Level	240 Ohm	-	284M		Senders Page 52
	90 Ohm	-	284BS		Senders Page 52
	73 Ohm	-	284BR		Use OE sender
Fuel Pressure	0-16 psi	-	284AM		114874
	0-15 psi	284E	-		Use braided stainless steel hose. Gauge must be mounted outside passenger compartment
Oil Pressure	0-80 psi	-	284AE		279A
	0-100 psi	-	284L		114875
	5-100 psi	284D	-		114840 (6 ft. tube) or 114841 (16 ft. tube)
	10-200 psi	284P	-		
Oil Temperature	140-320°F	-	284K		280EE-F
	140-325°F	284C36	-	36" capillary	
	140-325°F	284C72	-	72" capillary	
	140-325°F	284C144	-	144" capillary	
Trans Oil Pressure	20-300 psi	284R	-		114840 (6 ft. tube) or 114841 (16 ft. tube)
	25-400 psi	284S	-		
Water Temperature	100-230°F	-	284AF		280EA
	100-280°F	-	284J		280ED-F
	100-265°F	284B36	-	36" capillary	
	100-265°F	284B72	-	72" capillary	
	100-265°F	284B144	-	144" capillary	
Vacuum	0-30Hg	284AH	-		114842
	0-30Hg	82301	-	Motor Minder	114842
Voltmeter	10-16V	-	284H	Color Band	
	20-32V	-	284AJ	Color Band	

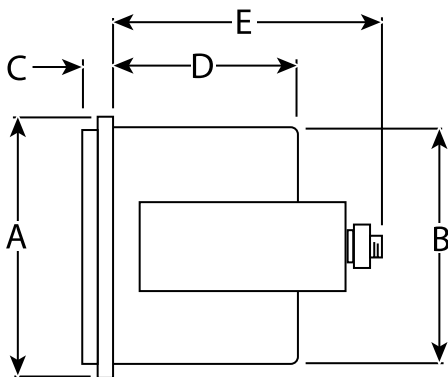
Kits include: Mounting hardware, light kit (bulb & socket), installation instructions. Purchase senders, tubing or shunts separately.

## Heavy Duty™ : Tachs/Speedometers



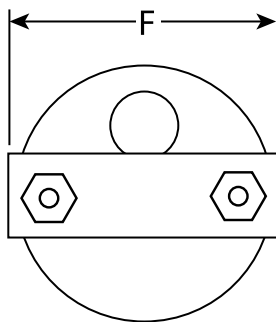
Type	Range	3-3/8"		Note:	Additional Kit Needed:
		Mech	Elec		
Speedometer	5-85 MPH		82642	Odometer	114878 or 82646
	5-85 MPH		82604	Odometer	Square Wave
	0-80 MPH	550HF-D		Odometer/High-Beam	
	0-160 MPH	550HH-D		Odometer	
Tachometers	6,000 RPM	535AK-D		.5:1 Ratio	
	6,000 RPM		82164B	4-, 6-, 8-Cyl (Ignition)	
	8,000 RPM		82165	4-, 8-, 12-Cyl (Ignition)	
	8,000 RPM		82171B	4-, 6-, 8-Cyl (Ignition)	

Kits include: Mounting hardware, light kit (bulb & socket), installation instructions. Purchase senders separately.



Side View

Gauges				
Dimension	2-1/16" Gauges		2-5/8" Gauges	
	in.	cm	in.	cm
A	2.28	5.79	.N/A	.N/A
B	2.06	5.23	.N/A	.N/A
C	.375	.95	N/A	.N/A
D	1.38	3.51	.N/A	.N/A
E	2.26	5.74	.N/A	.N/A
F	2.25	5.72	.N/A	.N/A



Back View

Tachometer/Speedometer				
Dimension	3-3/8" Mechanical		3-3/8" Electric	
	in.	cm	in.	cm
A	3.81	9.68	3.69	9.37
B	3.34	8.48	3.34	8.48
C	.49	1.24	.49	1.24
D	2.31	5.87	2.61	6.63
E	3.56	9.04	4.12	10.46
F	3.59	9.12	3.59	9.12