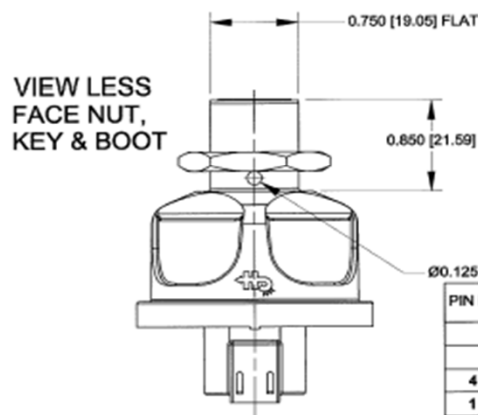
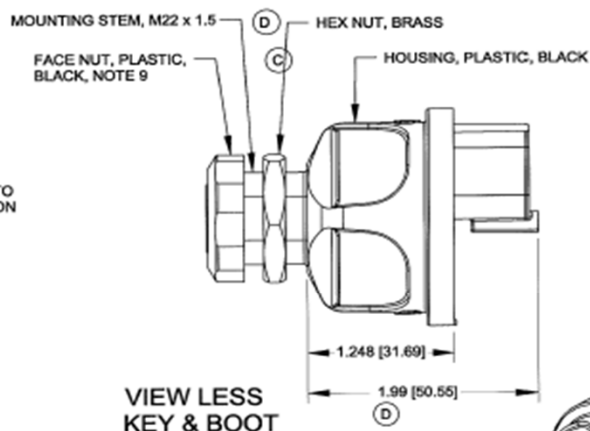


VIEW LESS
KEY & BOOT



VIEW LESS
FACE NUT,
KEY & BOOT



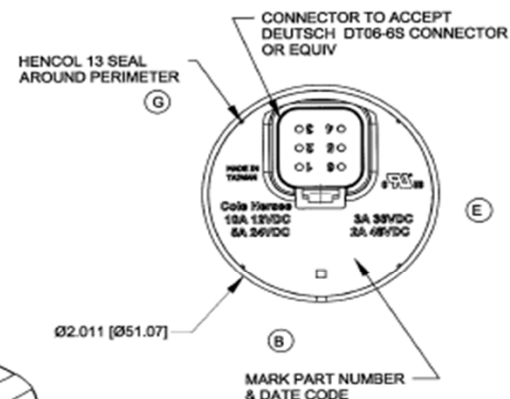
VIEW LESS
KEY & BOOT

2 DOUBLE BITTED BOOTED
KEYS RINGED, BLACK,
NOTE 9

(E)

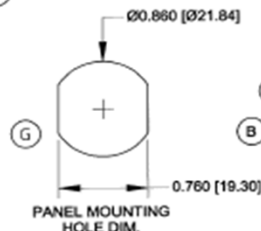
PIN NUMBER	CIRCUIT	12VDC RESISTIVE LOAD
2	START	5 AMPS
3	ACCESSORY	10 AMPS
4 & 5	IGNITION	10 AMPS
1 & 6	BATTERY	

PINS 1 & 6 CONNECTED TOGETHER INTERNALLY
PINS 4 & 5 CONNECTED TOGETHER INTERNALLY




NOTES:

1. TOLERANCES PLUS OR MINUS 0.015 [0.38]
2. CONTACT AREA SEALED TO IP67
3. BACK OF SWITCH SEALED WHEN MATING CONNECTOR IS INSTALLED
4. FOR RESISTIVE LOAD RATING SEE CHART OR BACK OF SWITCH
5. KEY REMOVEABLE IN OFF POSITION ONLY
6. FOR PIN LOCATIONS SEE CHART
7. MATERIALS: HOUSING BLACK THERMOPLASTIC
INTERNAL STATIONARY CONTACTS COPPER
8. START LOCKOUT FEATURE. SWITCH MUST GO TO "OFF" POSITION BEFORE THE START CIRCUIT CAN BE RE-ENERGIZED
9. KEY BOOT FITS OVER FACE NUT
10. SWITCH TESTED TO SAE J259, UL RECOGNIZED TO UL 1054
11. SW. MUST NOT BREAK CIRCUIT OR BE DAMAGED IF TORQUED TO 15 IN-LBS [1.69Nm]
12. IF THE APPLICATION MOUNTS THE SWITCH WITH THE LOCK CYLINDER OR LEVER APPROACHING VERTICAL, CONTACT THE FACTORY FOR AN APPLICATION REVIEW AND POTENTIAL ALTERNATE PRODUCTS BEFORE DESIGN IS SET.



*Part not drawn to scale.

	DESCRIPTION
Material	Black Thermoplastic
Rating	10A @ 12VDC, 5A @ 24VDC, 3A @ 36VDC, 2A @ 48VDC
Positions	3 (Off - Ign/Acc - Start)
Keys	2 Included
Connector	Deutsch DT06-6S / Amphenol AT06-6S
Sealed Keyed Ignition Switch, 3P (Off-Ign/Acc-Start) with Spring Return and Anti-Restart	
Date: 11/13/15	PART NO: 73489

uncontrolled copy