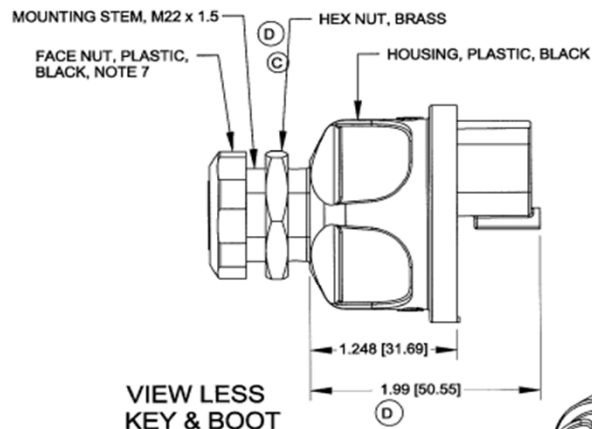
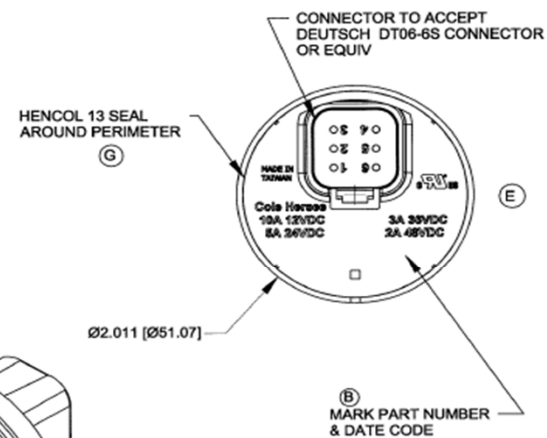
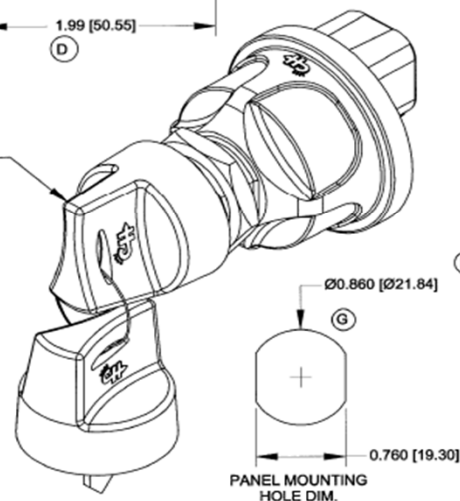


PIN NUMBER	CIRCUIT	12VDC RESISTIVE LOAD
2	START	5 AMPS
3	ACCESSORY	10 AMPS
4 & 5	IGNITION	10 AMPS
1 & 6	BATTERY	

PINS 1 & 6 CONNECTED TOGETHER INTERNALLY  
PINS 4 & 5 CONNECTED TOGETHER INTERNALLY



2 DOUBLE BITTED BOOTED KEYS RINGED, BLACK, NOTE 7



**NOTES:**

1. TOLERANCES PLUS OR MINUS 0.015 [0.38]
2. CONTACT AREA SEALED TO IP67
3. BACK OF SWITCH SEALED WHEN MATING CONNECTOR IS INSTALLED
4. FOR RESISTIVE LOAD RATING SEE CHART OR BACK OF SWITCH
5. KEY REMOVEABLE IN OFF POSITION ONLY
6. MATERIALS: HOUSING BLACK THERMOPLASTIC  
INTERNAL STATIONARY CONTACTS COPPER
7. KEY BOOT FITS OVER FACE NUT
8. SWITCH TESTED TO SAE J259, UL RECOGNIZED TO UL 1054
9. IF THE APPLICATION MOUNTS THE SWITCH WITH THE LOCK CYLINDER OR LEVER APPROACHING VERTICAL, CONTACT THE FACTORY FOR AN APPLICATION REVIEW AND POTENTIAL ALTERNATE PRODUCTS BEFORE DESIGN IS SET.
10. SW. MUST NOT BREAK CIRCUIT OR BE DAMAGED IF TORQUED TO 15 IN-LBS [ 1.69Nm]

\*Part not drawn to scale.

DEL CITY	DESCRIPTION
Material	Black Thermoplastic
Rating	10A @ 12VDC, 5A @ 24VDC, 3A @ 36VDC, 2A @ 48VDC
Positions	2 (Off - Ign/Acc)
Keys	2 Included
Connector	Deutsch DT06-6S / Amphenol AT06-6S
<b>Sealed Keyed Ignition Switch, 2P (Off-Ign/Acc)</b>	
Date: 11/13/15	<b>PART NO: 73492</b>

**uncontrolled copy**